

**Middle Fork of the American River
Placer Bars in the 1880s and in the 1970s**

Foreword

These images are organized to facilitate comparison of what a particular placer bar looked like in the 1800s compared with how it looked in the 1970s. There are 2 images for each of 17 placer bars, as seen from the same vantage point.

Many placer bar names changed over time. Annotations on some of the images, as well as a companion document discuss this.

I

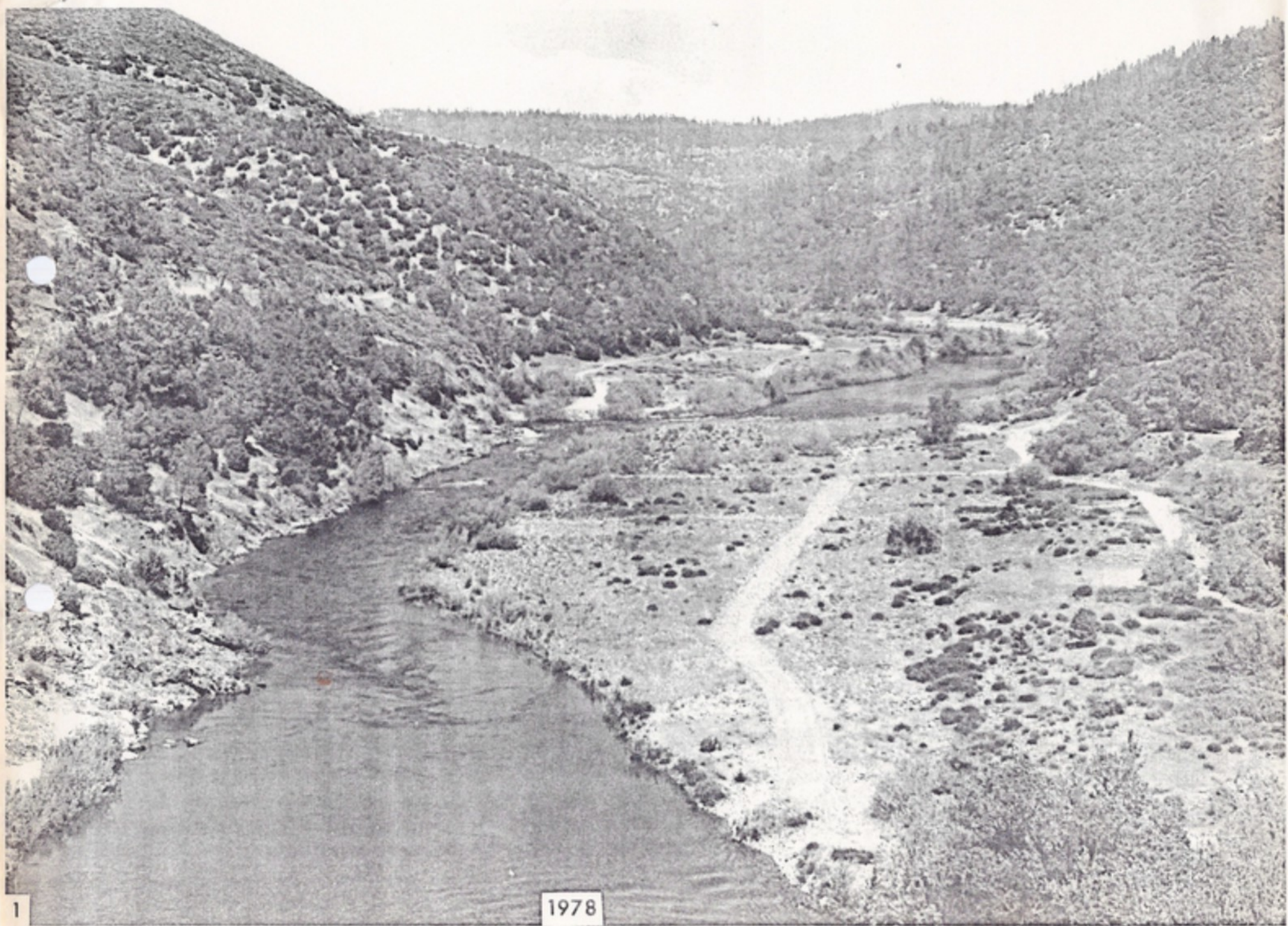


1

Kenebeck Bar. 1858
Wildcat Bar - Willow Bar - Hossier Bar

34-1.5"





1

1978

2



2

Hossins Bar Middle Fork
American River.

1858

Brown's wheel



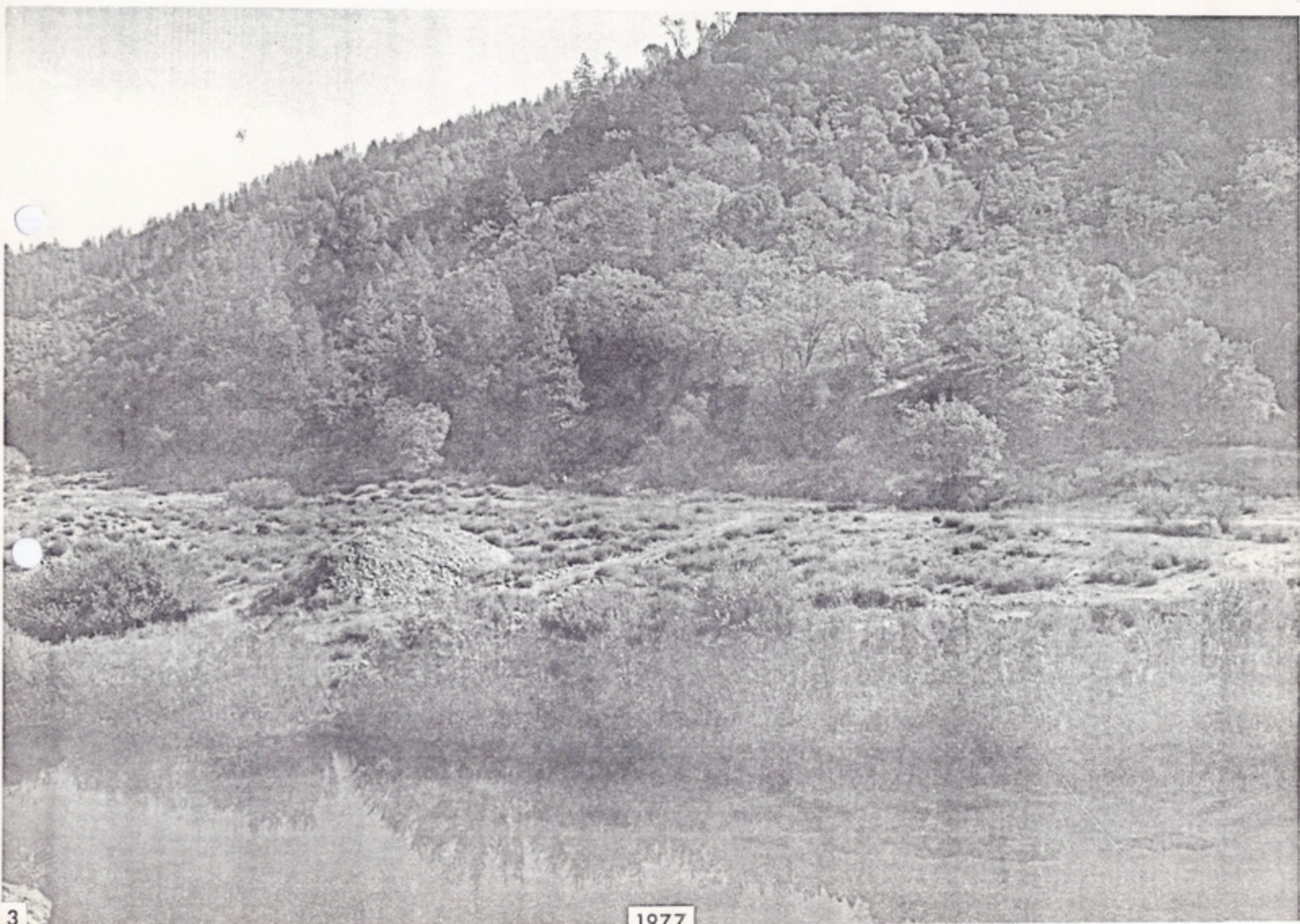
3



3

Passage Bar 1858

Hoosier Bar



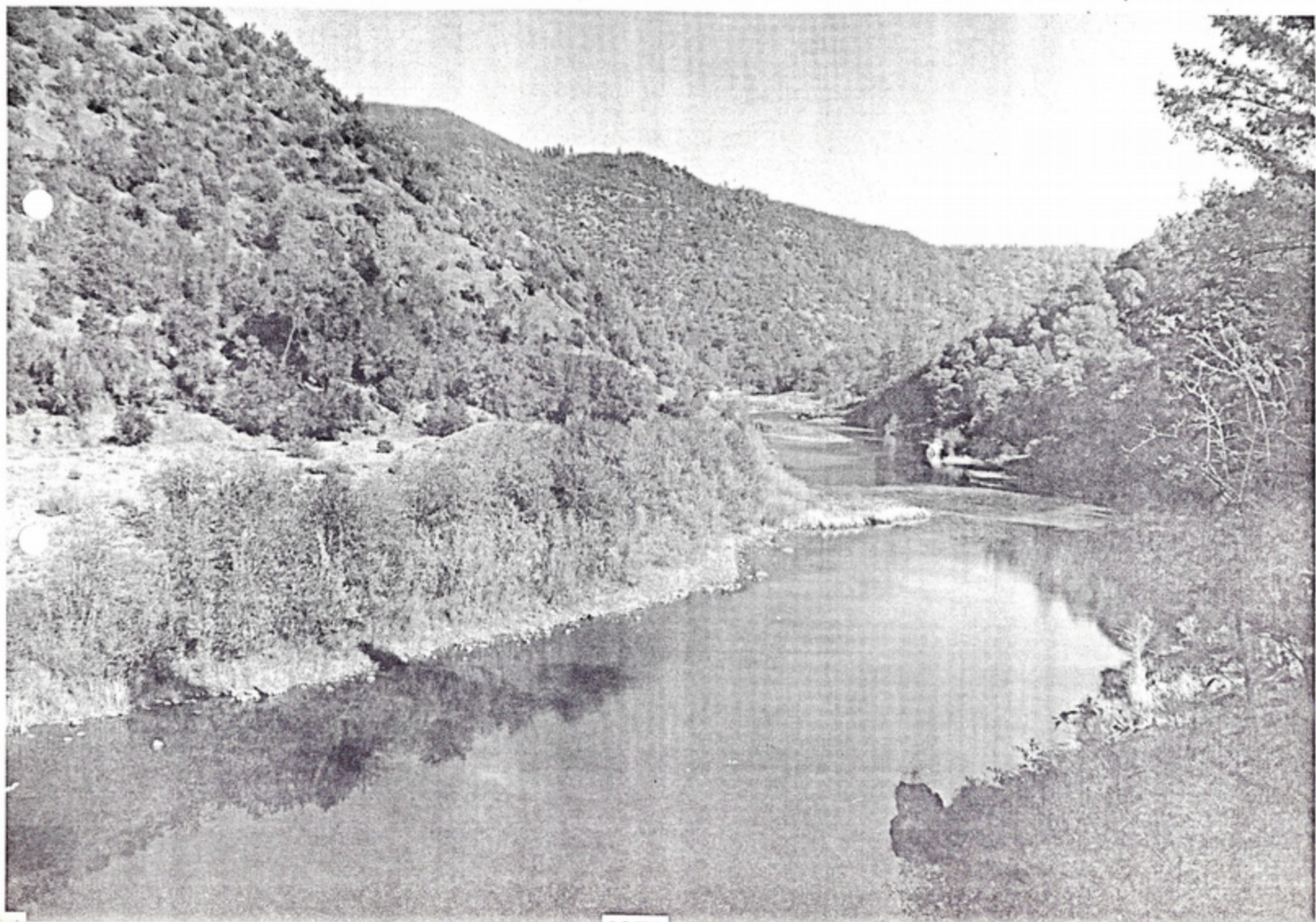
4



4

Grand Mountain Bar. 1858

Green mountain Bar

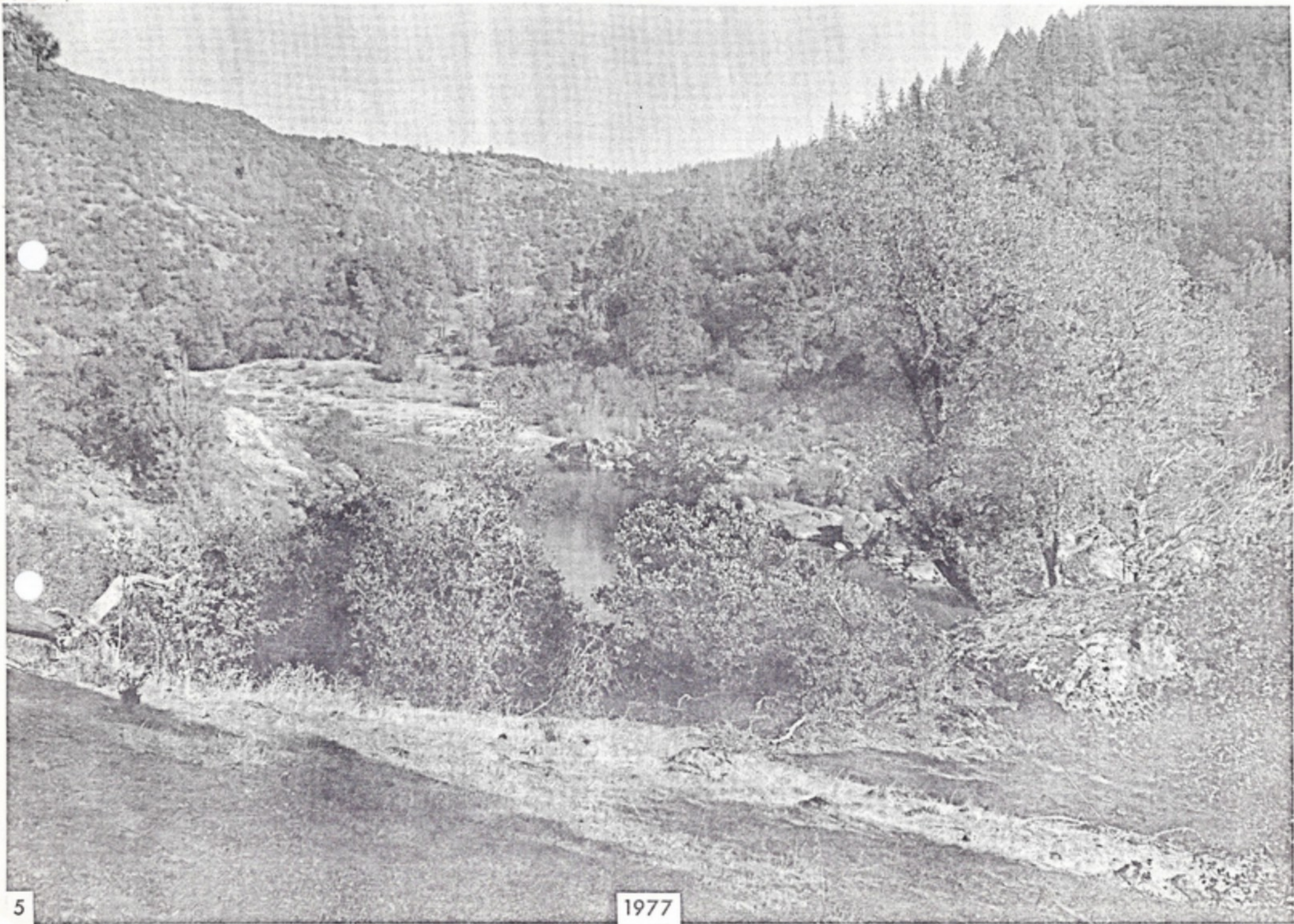


5



5

Maine Bar from the West. 1858



5

1977

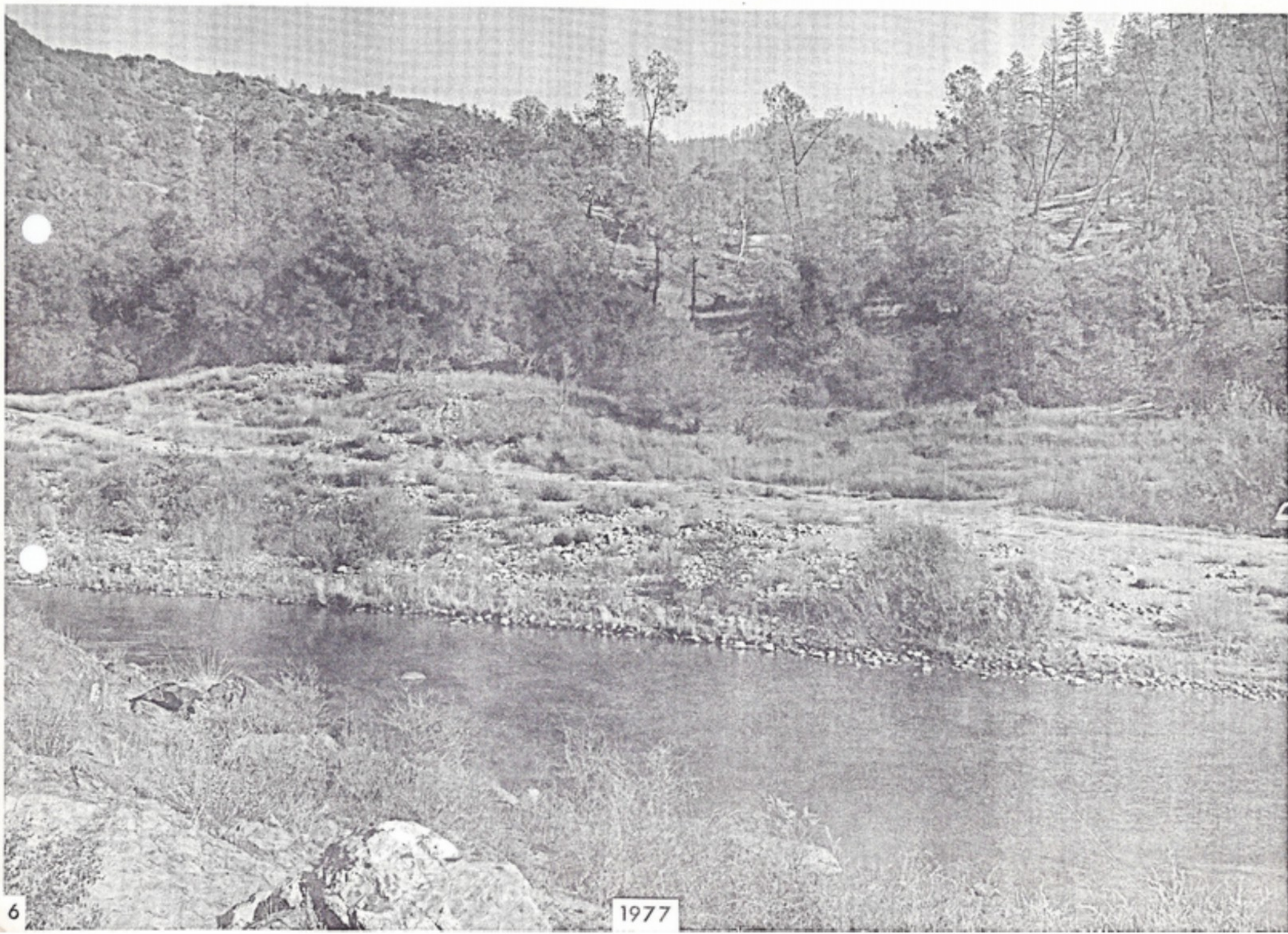
6



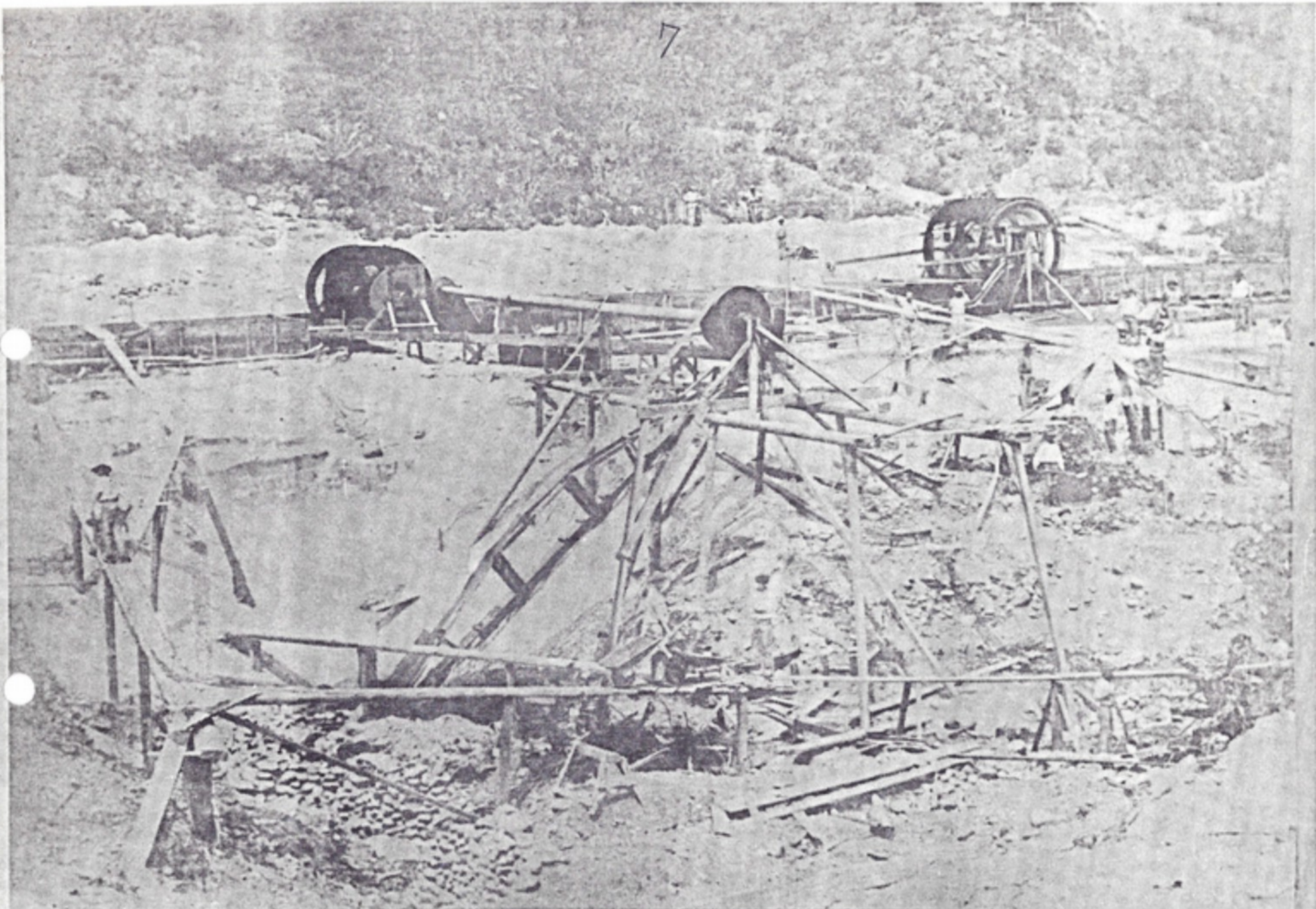
Miners coming from dinner Cranwilles Claim 1858

6

maine Bar



7



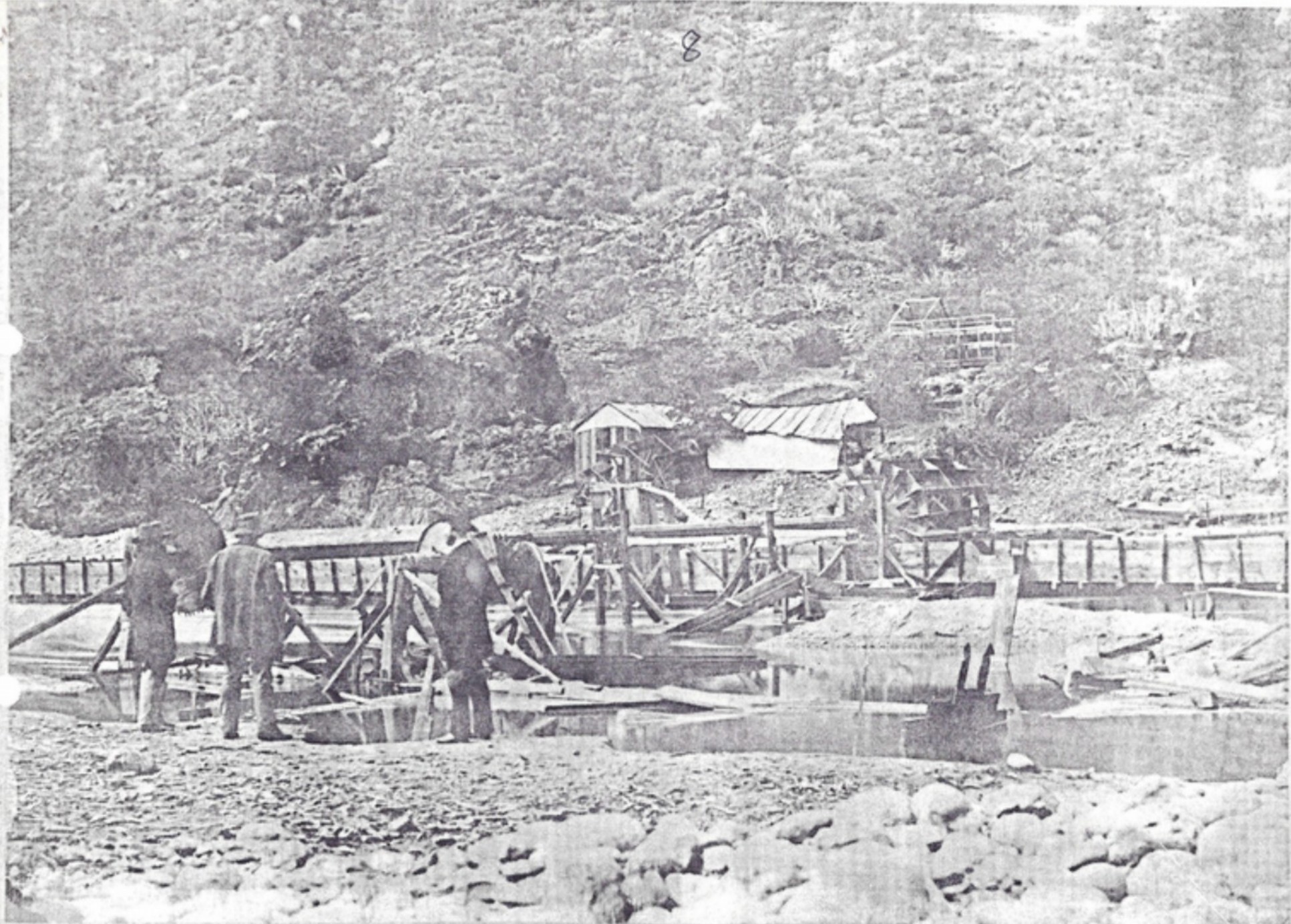
7

Maine Bar Claim. 1858

Cromwells Claim, Maine Bar



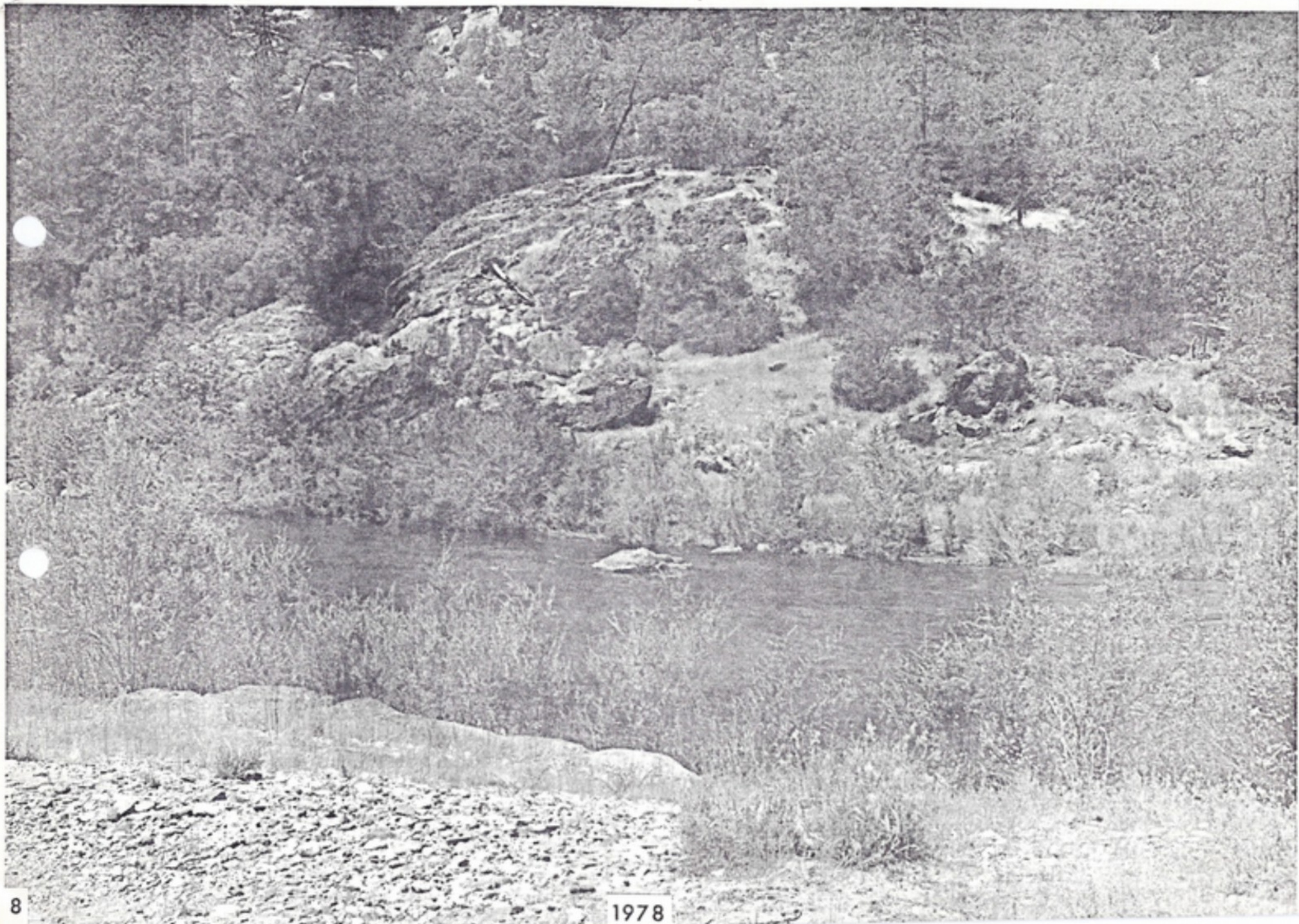
8



8

Sardine Claim 1858
main Bar

351122



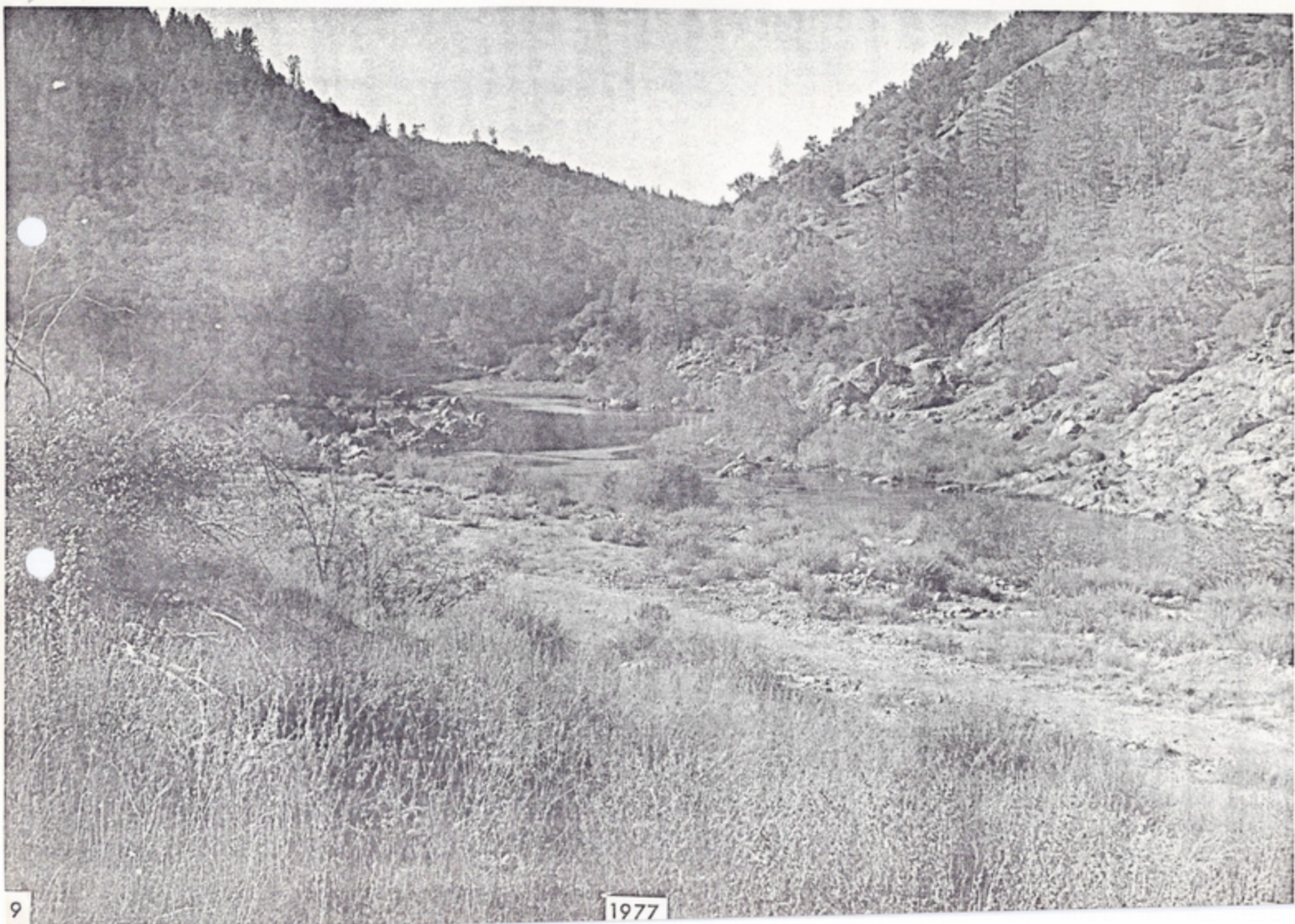
9



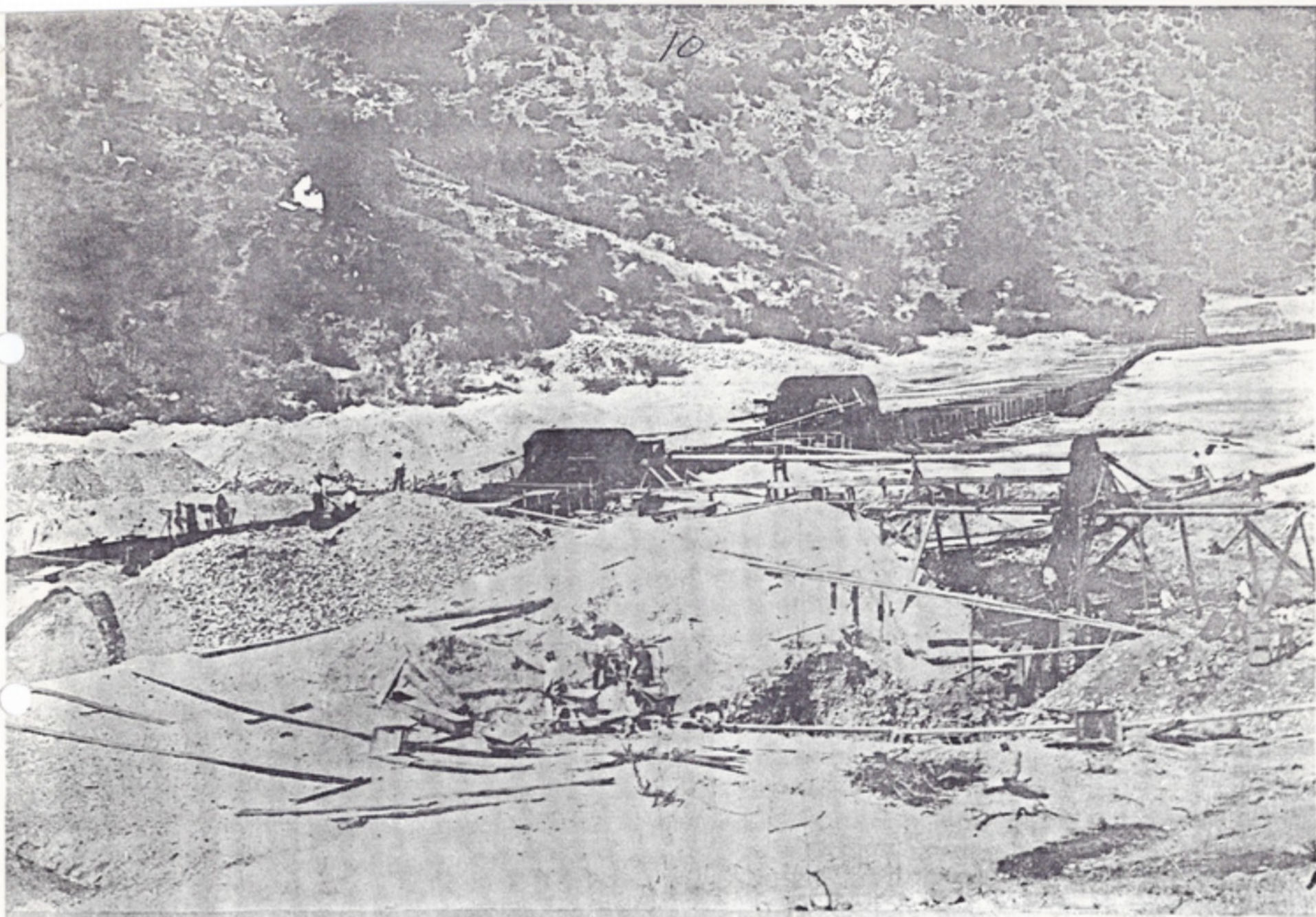
9
Cromwells Claim Maine Bar. 1858

Cromwells Bar, Maine Bar

54.1-3

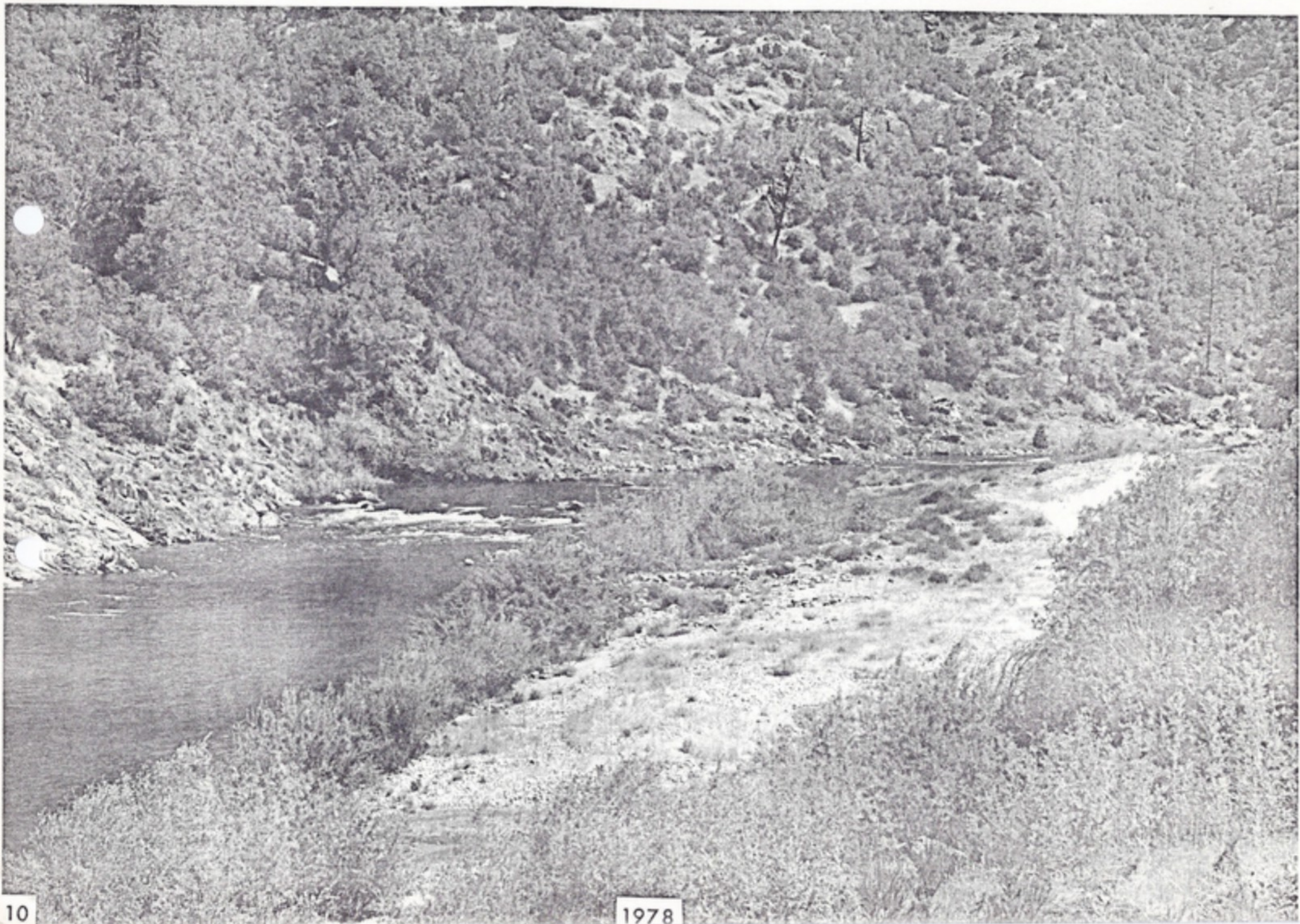


10



10

Young America Claim. 1858
Cromwells Claim, Maine Bar



//

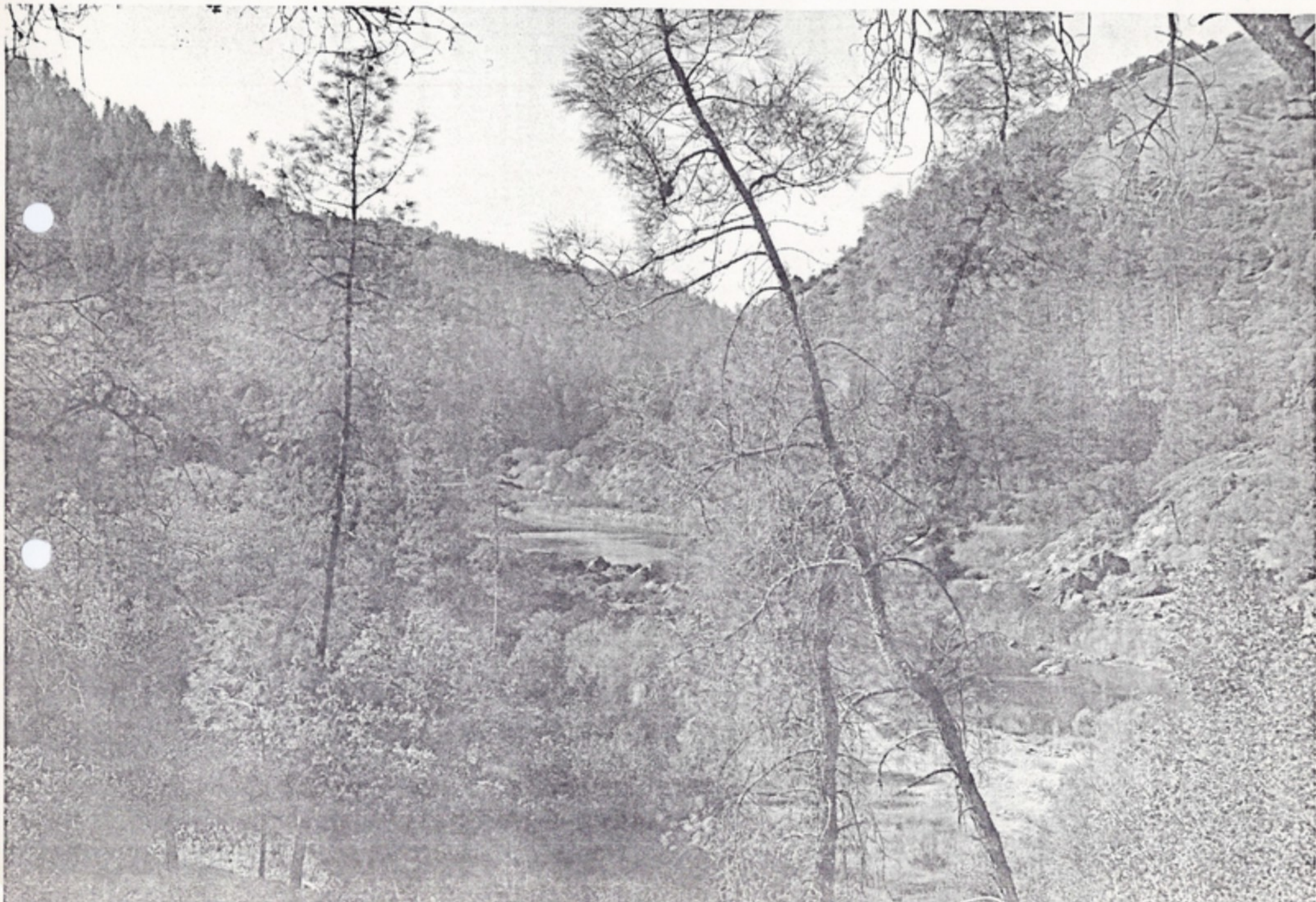


11

Maine Bar from the East. 1858

3-1-18

L.P. 1858



12

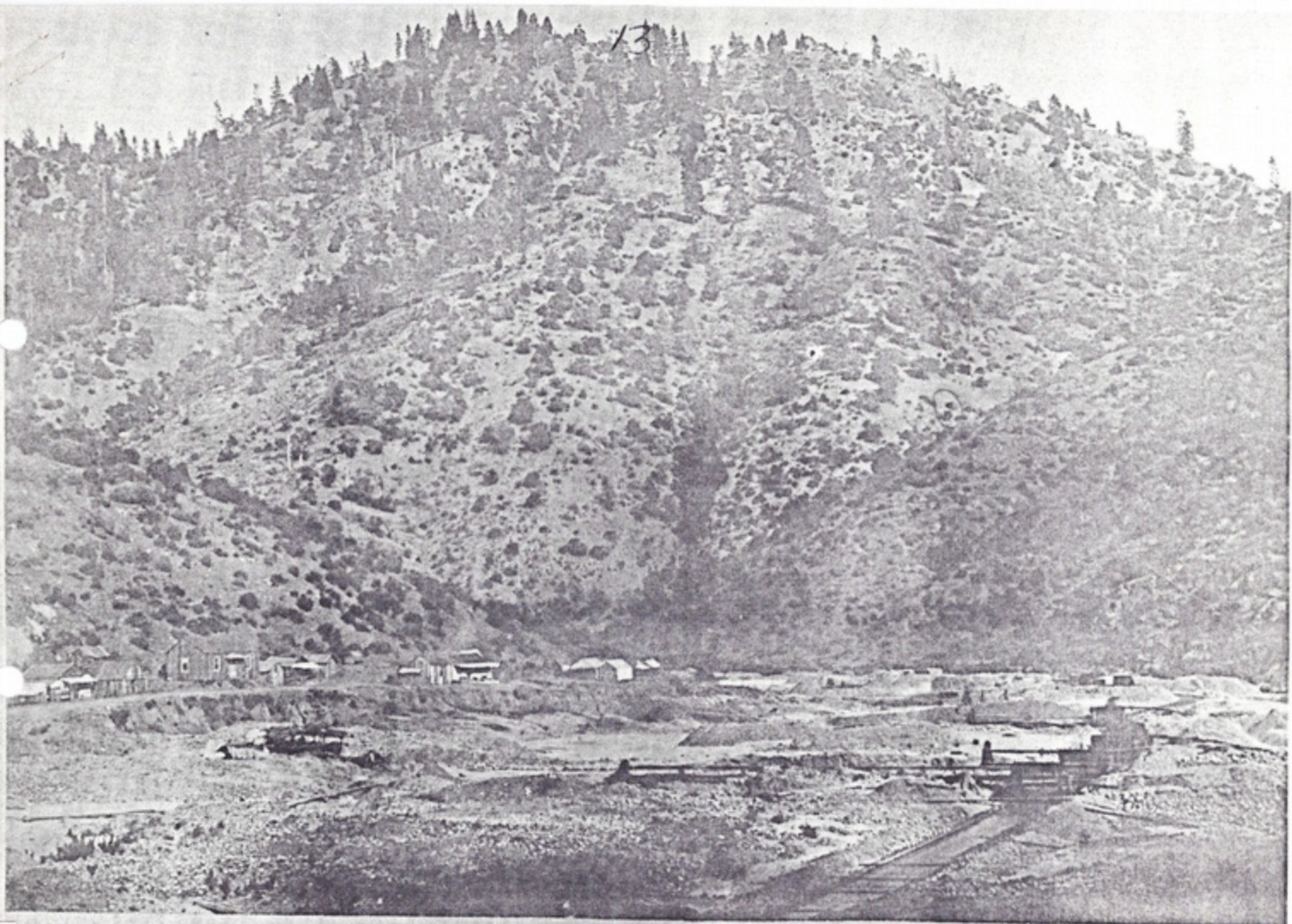


Between Maine Bar and Poverty Bar

1858



13



13

Spanish Bar Mountain. 1858

39-1123



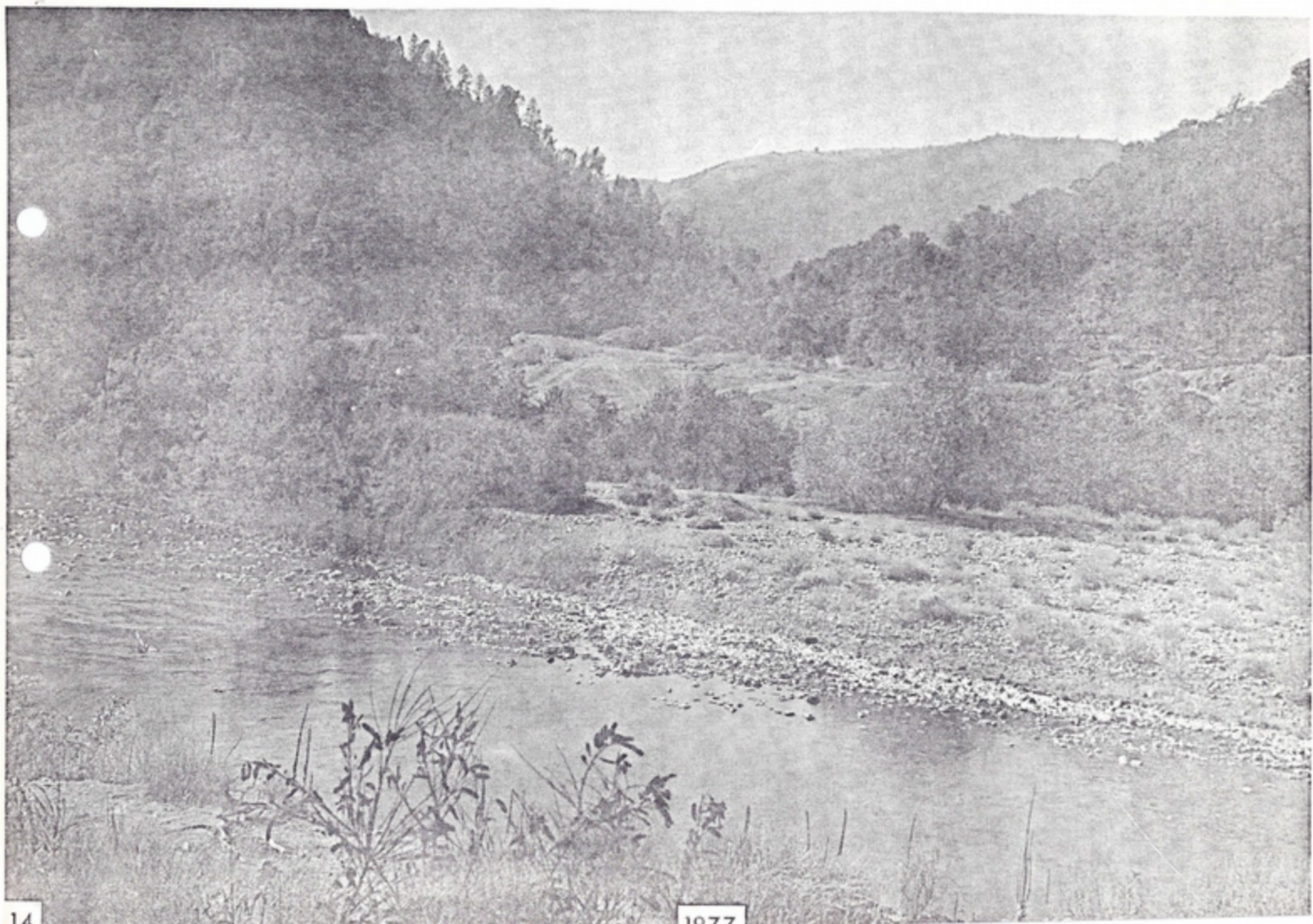
14



14

Poverty Bar from the East. 1858

Poverty Bar at Right



15



15

Poverty Bar. 1858

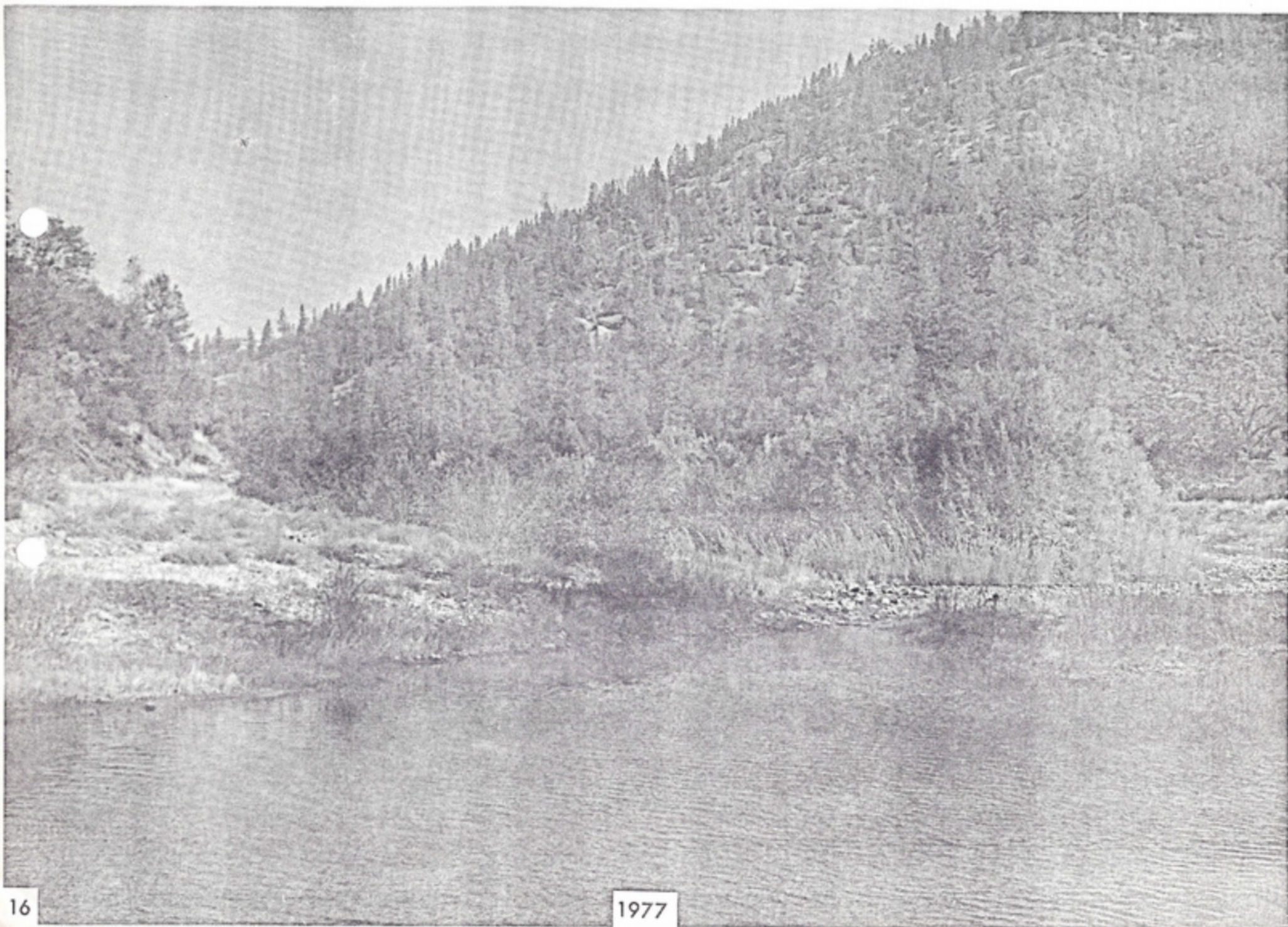
54-118
Olay, G.M. 222, KP 91-262 N





16

Dutch Claim Poverty Bar 1858



17



17

View from Poverty Bar to Oregon Bar. 1858

39-1.2

Copyright 1958 by the U.S. Government

Poverty Bar, view toward Spanish Bar

