



M3
unknown
Key

Early day dam, perhaps below
Auburn.



F9
Blue

Unloading a large boiler at Cash
Rock, using a large tree & gin
Pole



LAKE
GREYEAGLE
MINE

H6
Blue

Lake at Grey Eagle Mine
near Spring Garden School



H 5
Blue

Grey Eagle mine
Located near Spring
Garden School



H1
Blue

Black Smith Shop
Grey Eagle Mine near Spring Garden
School



LOWING MICH. STATE C.R.L.

F2
Blue

Big Gun Pit, Michigan Bluff, CA
Stream of water powerful enough
to cut a man in half.



F1
B/44

Note crude box to hold rocks for use as counter balance. Also note ball and socket joint at the base of monitor. Later on each hydraulic monitor also were mounted w/ ball & socket joint. This enabled one man to work the the big gun in any direction by merely letting the high pressure jet of water direct the large monitor where the operator wished; using one hand & very little effort on his part. Before the addition of the directional nozzle it required 3 or 4 men to move the gun to a new direction due to the high pressure thru the main gun. The movable nozzle performed as a servo unit to a slave monitor and worked exceedingly well.



BATHURST
GRAVEL PIT

F3
Blue

Hydraulicking in the Paragon
Pit at Bath, CA on the Forest
Hill Divide, Placer County



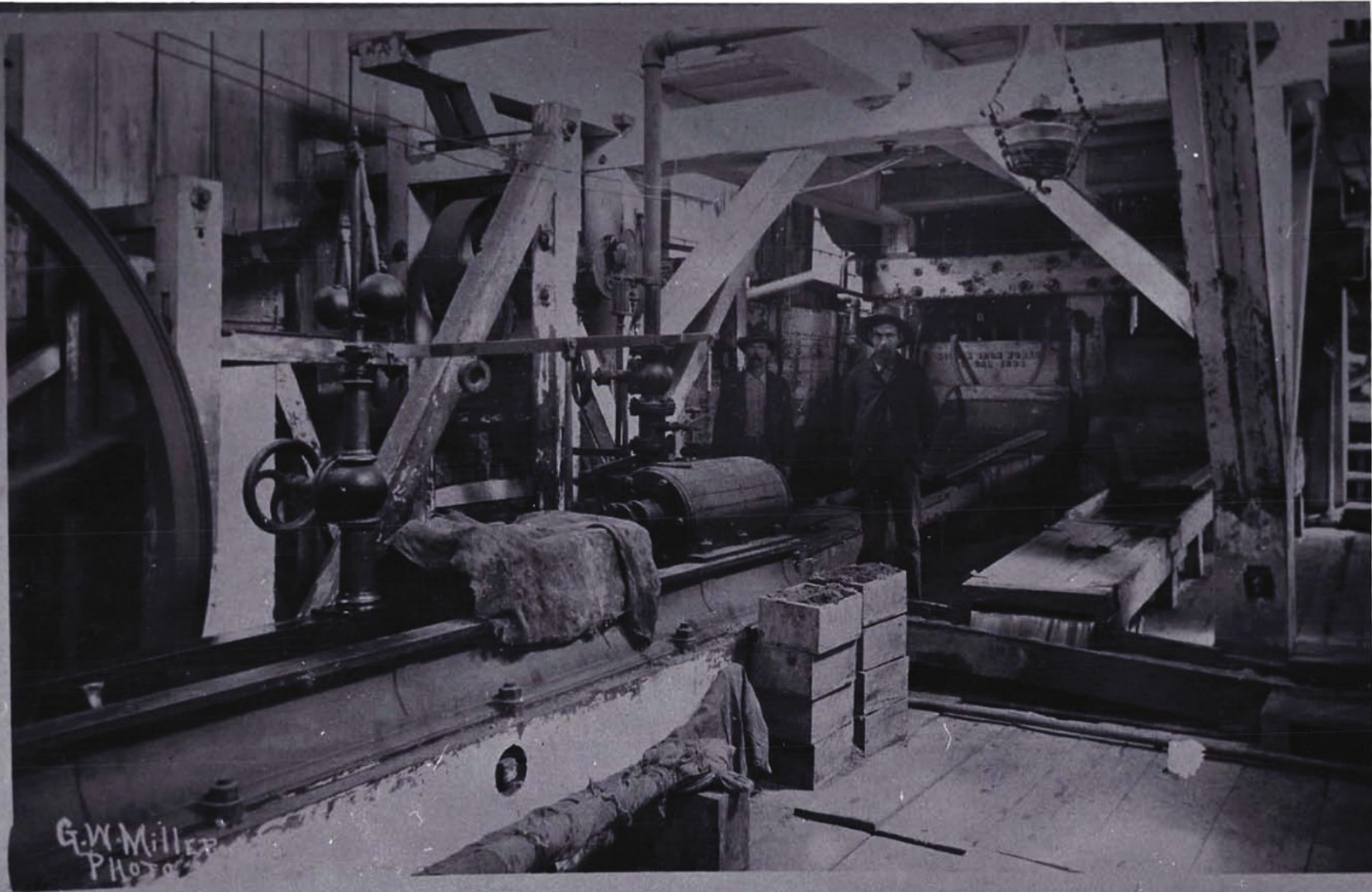
F4
Blue

Hydraulic monitor or water canon
at work, slicing the earth and
gravels & washing it on down thru
the sluice boxes or long toms
which separate the heavy gold
from the gravel.



G3
Blue

Hauling large section of the Gugenheim
Dredge to Mammoth Box about 1910 or 1911.
Shown are the two freight wagons and
part of the 30 mixed horse and mule
team plus the 4 drivers. Bill Patrick
was the head driver. One driver
sitting on first mule on the right.



Morning Star Mill, Iowa Hill, Cal.

5C
Gold

With Compliments of H. Simonds, Foreman.

Iowa Hill, CA

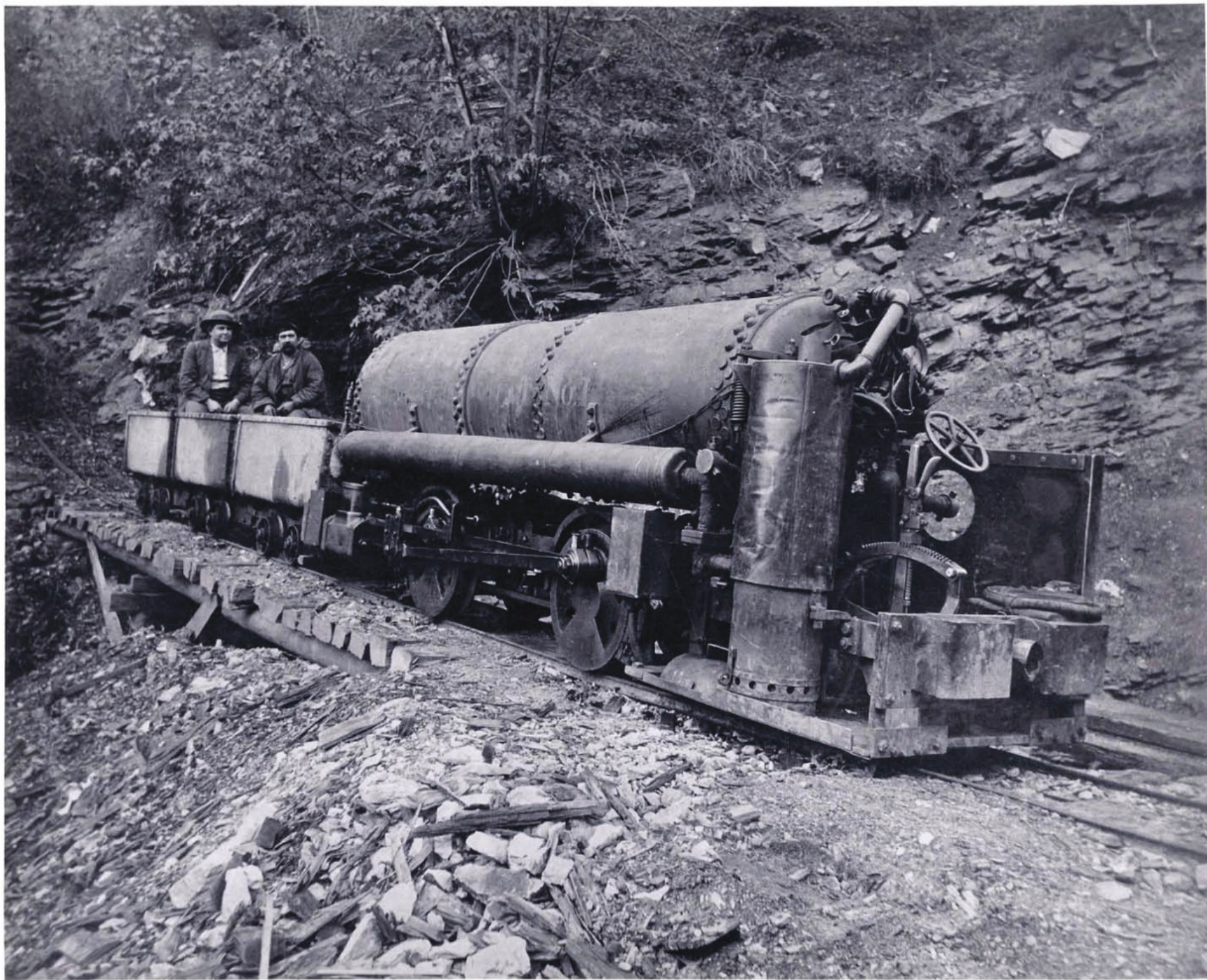
May 29, 1960: Harold T. Power, Superintendent

Morning Star Gravel Mill, 10 stamps,

Iowa Hill, CA. Motive power, water

from Morning Star Reservoir in Section
16T, 15N, R11.

E.M.D.M. Auxiliary: Steam Power



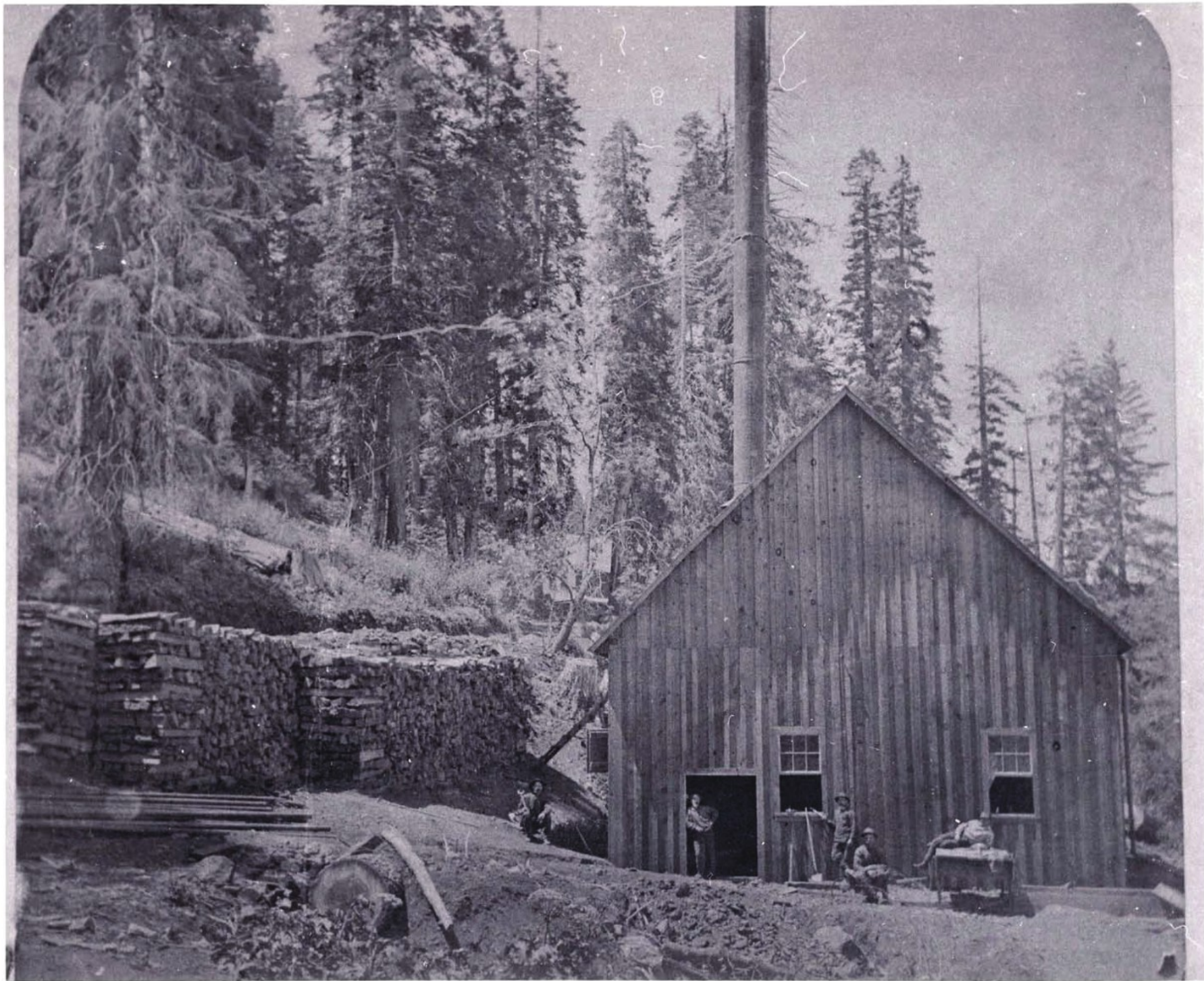
11A
Gold

Compressed Air Locomotive, Red
Point Mine, Damascus, CA, Forest
Hill Divide. J.A. Ferguson, Superintend-
ent & Albert Rodgers, Engineer



7E
Gold

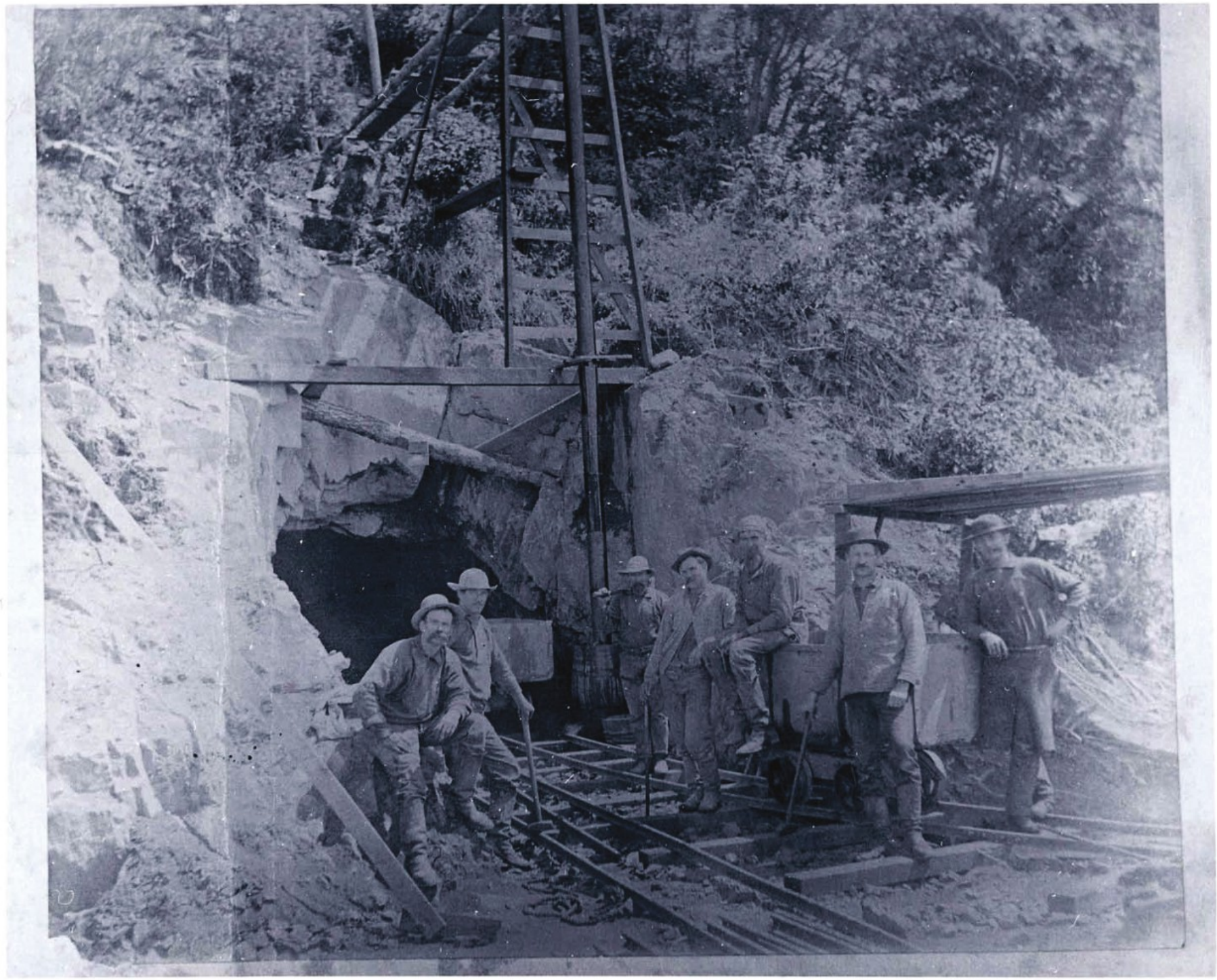
Breasting in Baltimore mine,
Forest Hill, CA



4B
Gold

Boiler and Compressor House,
HogsBack Mine, Foresthill Divide
CA.

William C. Ralston, Superintendent



6A
Gold

Portal to Hogsback Tunnel
1877, Forest Hill, ~~CA~~^{Divide}, east
of Westville, CA

William. C. Rakston
Superintendent

Standing by cast

V. T. McCall, Foreman

on extreme left

Thomas E. McCall



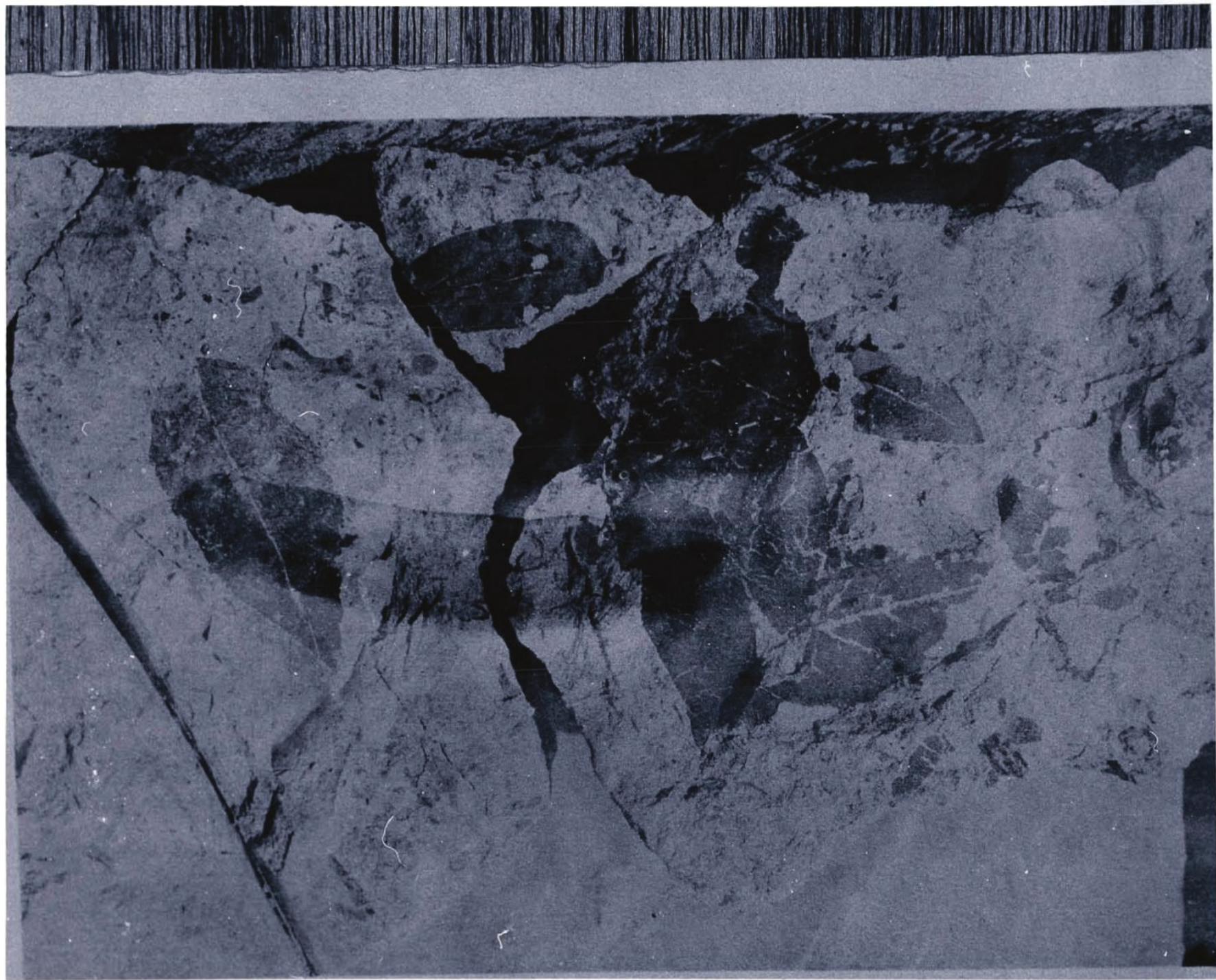
8E
Gold

Chinese Mining in bed of Indian
Canyon - Iowa Hill, CA. Below
Morning Star Mine



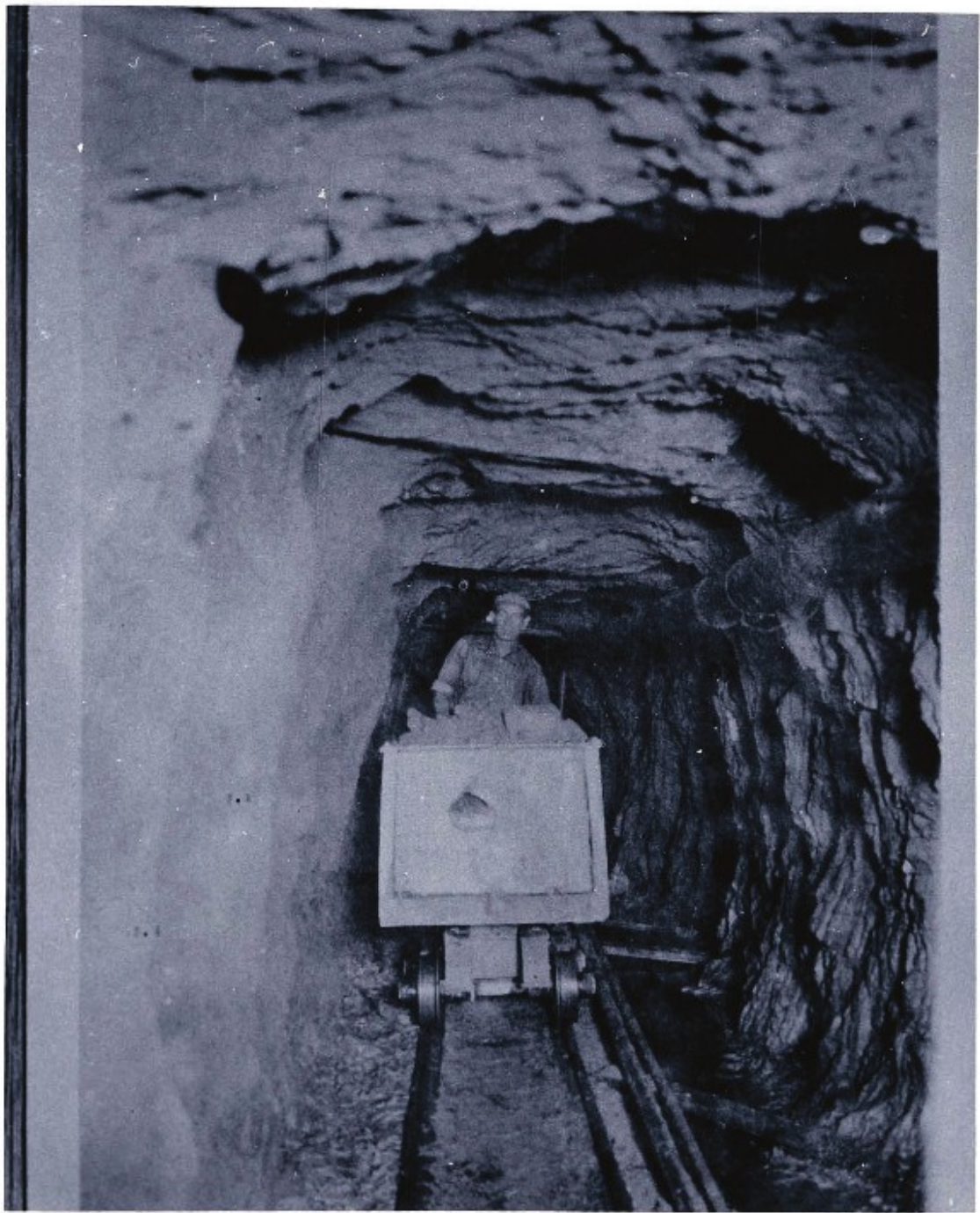
9E
Gold

Jupiter Mine, Iowa Hill, CA
H. F. Calenberg



10E
Gold

Leaves found in sediment at the
Jupiter mine, Iowa Hill, CA



4E
Gold

Bedrock Tunnel, Baltimore Munic
Forest Hill, CA



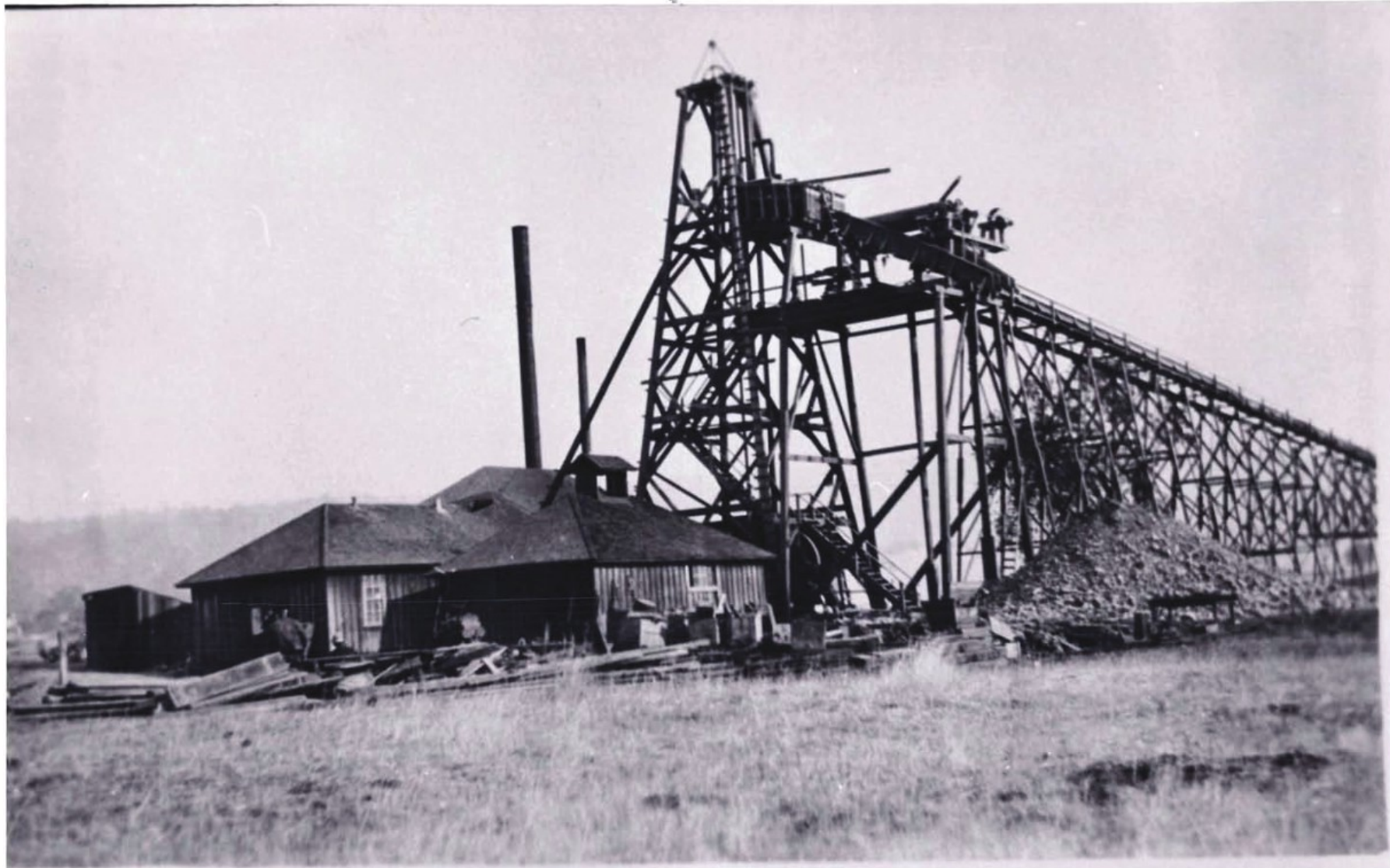
GE
Gold

Breast, Lower No. 4- at Baltimore
mine, Forest Hill, CA



8I
Gold

Hydraulic Monitor washing the
gravel banks.



IV
6dd

View of Neet Flume.

Blue Ravine Mine, Folsom, CA.



5 B
Gold

Office, Hogsback Mine, Forest Hill
Divide, CA

William Reiston, Superintendent



8 B
Gold

Compliments of H. Simonds, May 29,
1900. Morning Star Mine, Iowa Hill,
CA.

Harold T. Power, President and
Superintendent

