

70  
odd

Railroad St, East Auburn, CA

Hink Block on left



TRAILROAD ST. E. AUBURN - CAL

*Hink Black on left.*

65  
Blue

An eight horse team drawing  
lime rock from the quarries



An eight-horse team drawing lime-rock  
from the quarries. Freeman Hotel at right.

60  
Gold

Auburn Station on Central Pacific  
Railroad

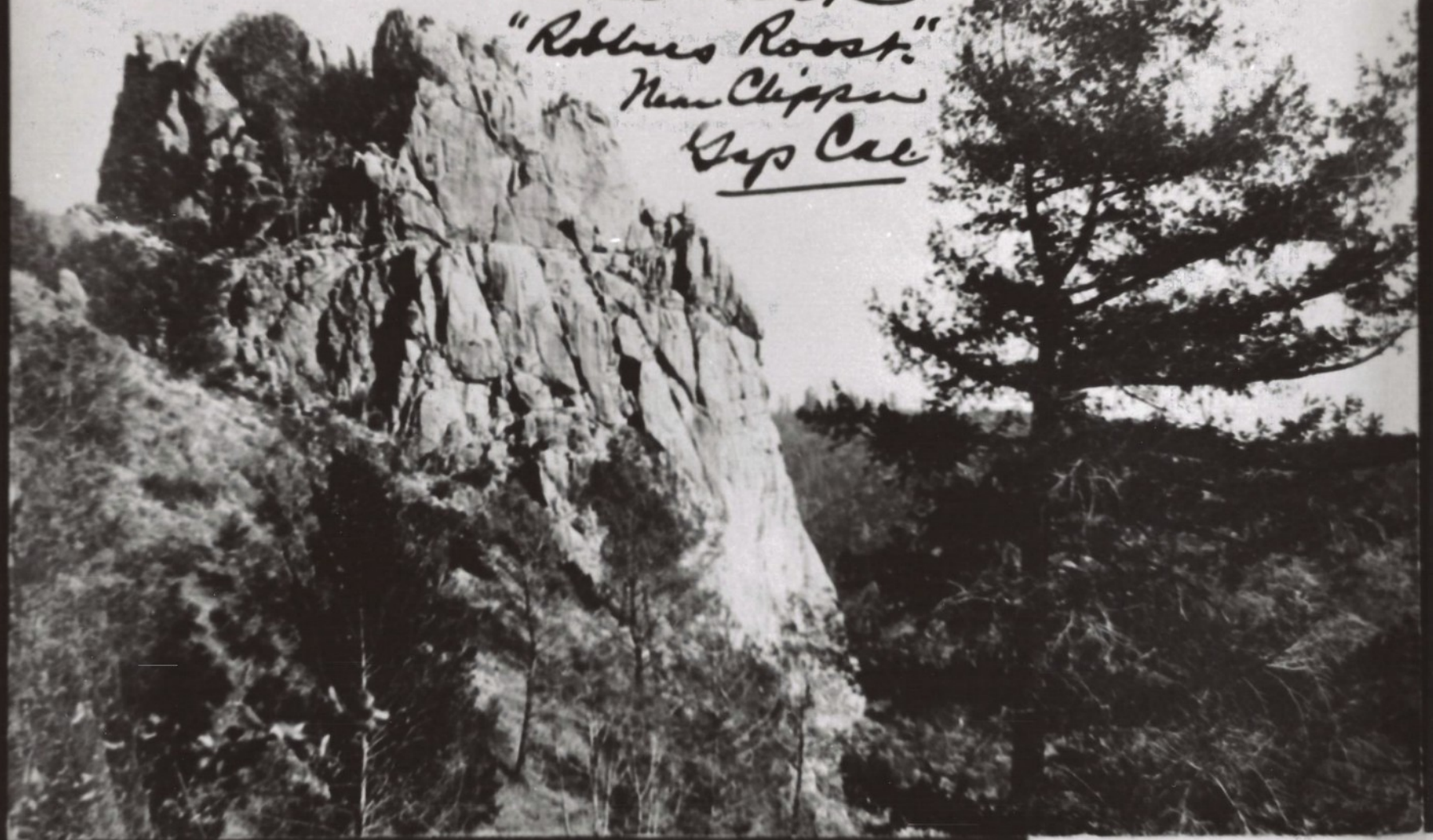


*Auburn Station, on Central Pacific R.R.*

57  
Gold

Lime Rock, "Robbers Roost": near  
Clipper Gap, CA across canyon  
from road to Forest Hill.

Lime Rock:  
"Robbers Roost."  
Near Clippan  
Sap Cal.



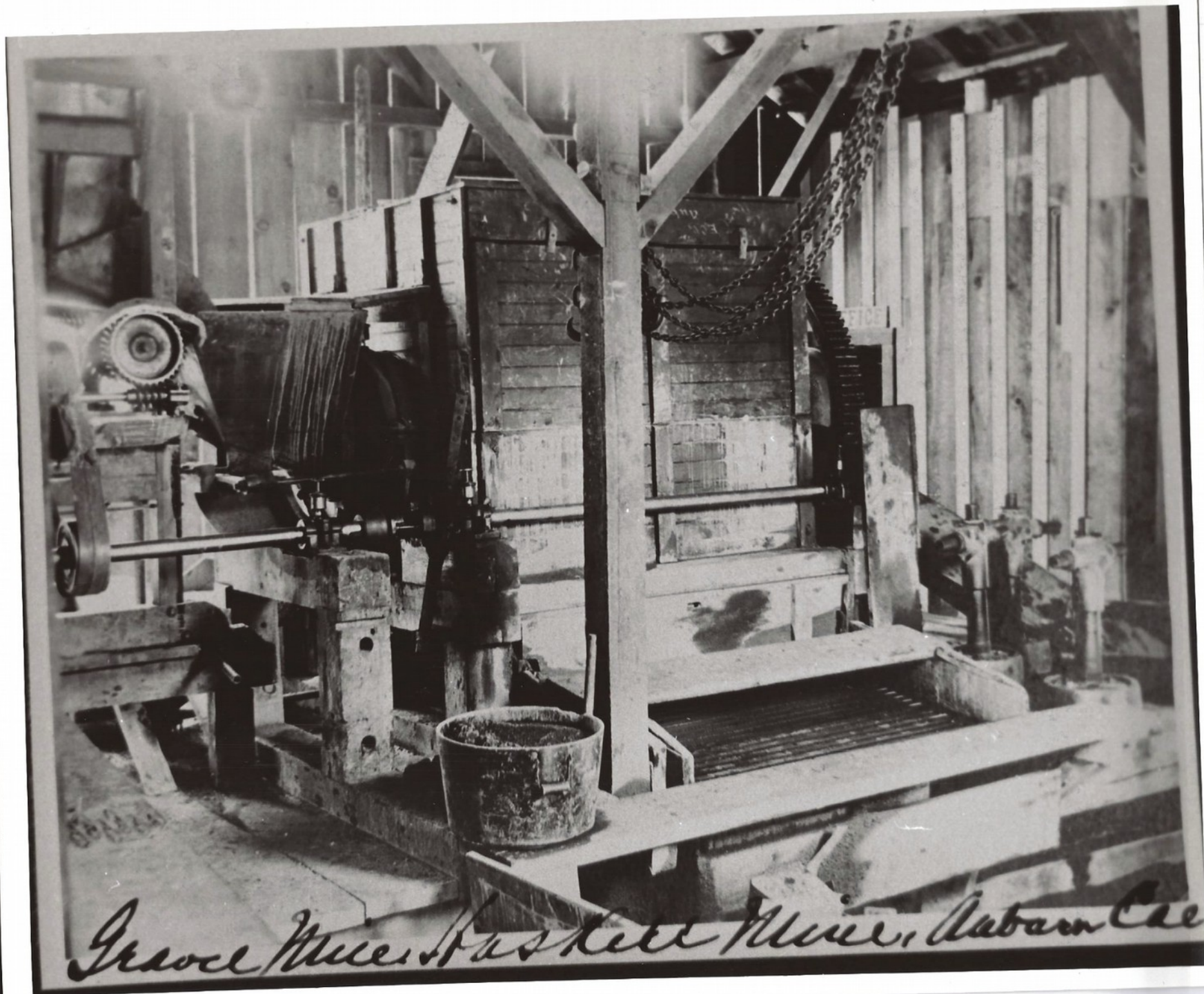


2 J  
Gold

Mill Building, Haskel Mine,  
Auburn, CA.



*Mill Building, Haskell Mine*



Grace Miller, Basket Mill, Auburn, Cal.



A3  
Blue

Aug. 14, 15, 16, 1920, First Trek into Placer County  
Big Trees sponsored by the Auburn Chamber of  
Commerce President Walter Durfee and senator  
Wm B. Lardner, co-author of the 1924  
Lardner-Block history of Placer and Nevada  
Counties. Picture showing the roots and  
truck of the fallen Teddy Roosevelt  
tree which fell in the winter of 1862.  
5th from left wearing straw hat is  
H.B. Lardner.



Al  
Blue

Second trek into the "Placer  
County Big Trees", Sat, Sun & Mon,  
August 27, 28 & 29, 1921





A4  
Blue

First Trek into Placer County  
Big Trees, Aug 14, 15, 16, 1920  
The whole group sitting on the  
roots of the Teddy Roosevelt  
Tree

